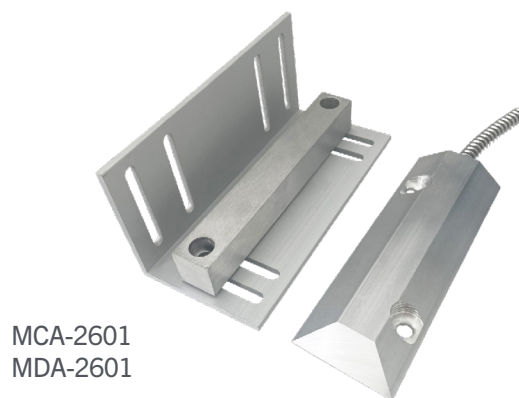


Overhead Door and Specialty Door Contacts

General Lock overhead door and specialty contacts to detect door position and support integration with access control or alarm systems.

- Normally Closed and SPDT Loop Detection
- Specialty Switches for Door Jamb and Window Application
- OHD - Track Mounted and Floor Mounted
- OHD - Armored Cable
- OHD - Designed for Sectional Style and Roll-Up Doors



SKU#	PART#	TYPE	DESCRIPTION	GAP	LOOP
CS514465	ASH-38-W	Window Jamb Plunger Switch	Recessed w/ Screw Adjustment	N/A	Closed
CS514464	CM-1840-STLDR	Collapsible Channel Magnet	Steel Door Channel Magnet	N/A	Closed
CS514466	JS-34-W	Door Jamb Plunger Switch	Recessed w/ Spacer	N/A	Closed
CS456800	MCA-2500-A	Overhead	Track Mount - Armored Cable	2-1/2"	Closed
CS456801	MCA-2601-A	Overhead	Floor Mount - Armored Cable	2-5/8"	Closed
CS516233	GL-MSS-400	OH Door - Xtra Wide Side to Side	Floor Mount - Armored Cable	1-1/2"	Closed
CS491821	MDA-2500-A	Overhead	Track Mount - Armored Cable	2-1/4"	SPDT
CS491895	MDA-2601-A	Overhead	Floor Mount - Armored Cable	2-1/2"	SPDT
CS514576	MF-875-GL	Rare Earth Mag. 1/8x3/8x7/8	Flat Magnet with Adhesive Tape	N/A	N/A
CS514463	RCL-1034-CM-W	RECS,CLSD,Leads,3/4"DIA,WH	Recessed 3/4" Dia. w/ Channel Magnet	7/8"	Closed
CS456791	SCA-1520-A	Surface	Aluminum - Armored Cable	1-1/2"	Closed
CS491820	SDA-1520-A	Surface	Aluminum - Armored Cable	1-1/4"	SPDT
CS514467	TS-01	Surface Mounted	Tamper Switch	N/A	Closed

250114D073