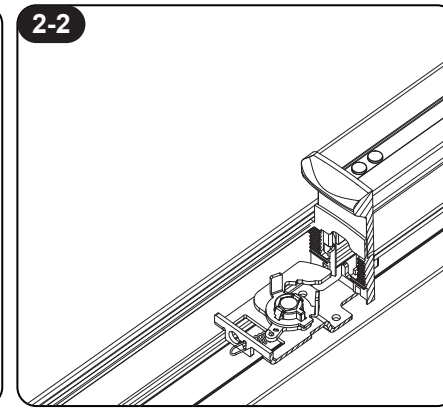
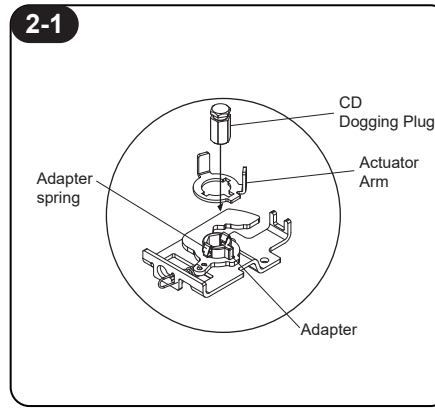


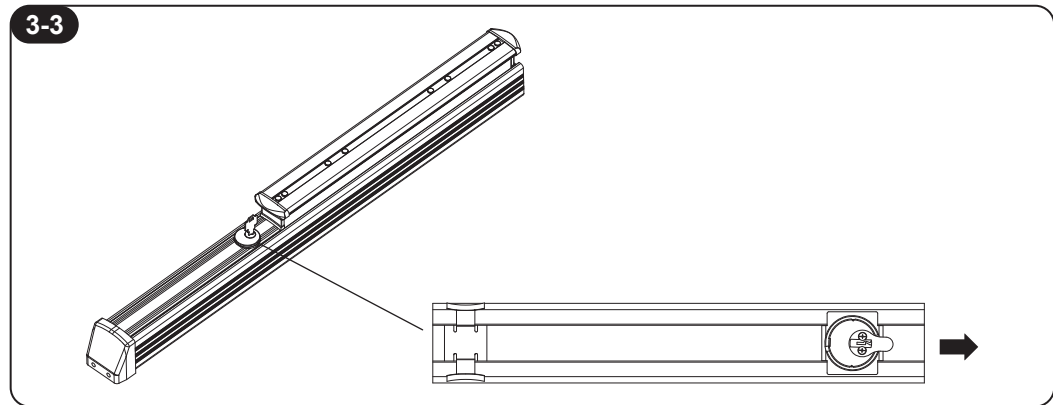
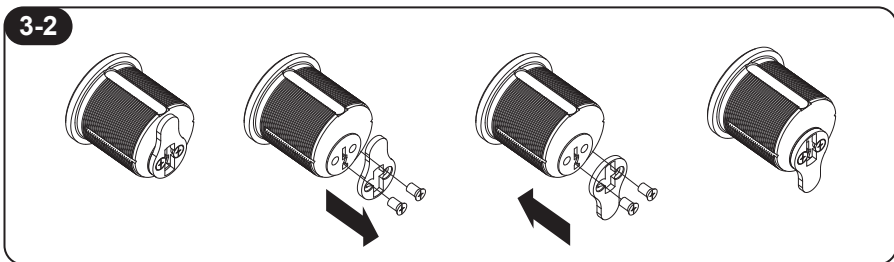
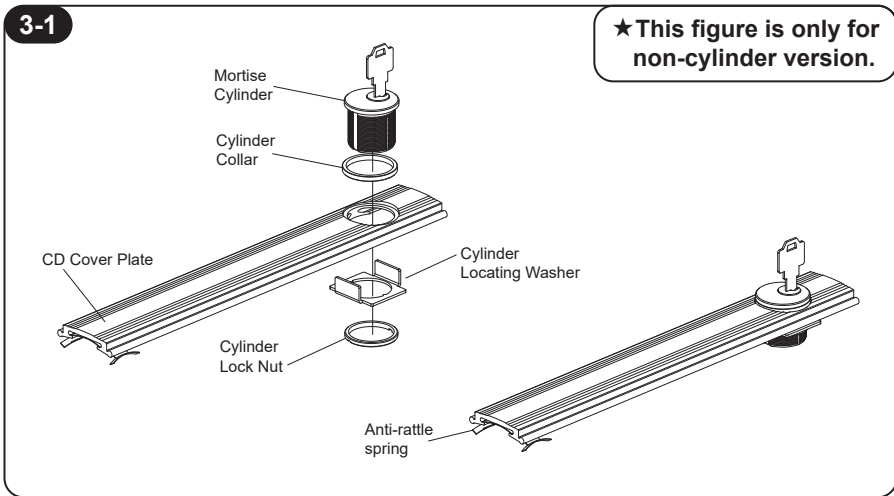
### 1. Disassemble and remove dogging shaft

- 1.1 Remove end cap and end cap bracket (figure1-1).
- 1.2 Slide off cover plate (figure1-2).
- 1.3 Remove dogging shaft by pulling straight up (figure1-2).



### 2. Install actuator arm and reassemble

- 2.1 Place actuator arm over adapter and press until parts snap together (figure2-1 · 2-2).
- 2.2 Insert CD dogging plug into hex hole in adapter and press until adapter spring snaps into top groove of CD dogging plug (figure2-1 · 2-2).



### 3. Install dogging cylinder

- 3.1 Assemble mortise cylinder and cylinder collar into CD cover plate, then install cylinder locating washer and secure cylinder with cylinder lock nut (figure3-1).
- 3.2 Remove mortise cylinder cam and replace in reverse position with key removed (figure3-2).
- 3.3 Make sure cylinder and cylinder cam are in position shown in figure 3-3 before sliding CD cover plate in place.
- 3.4 Slide assembled cover plate on device keeping anti-rattle spring in place.
- 3.5 Replace end cap bracket and end cap (figure3-3).
- 3.6 Check device for proper dogging operation.